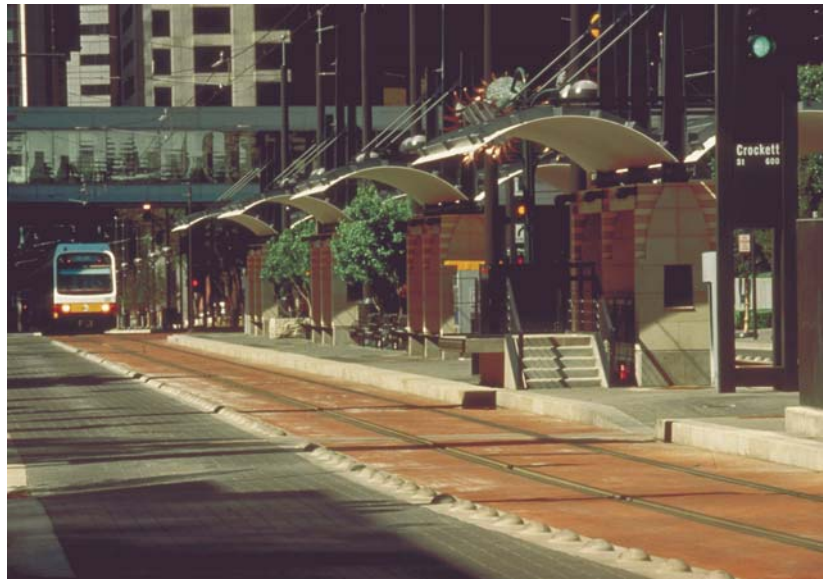


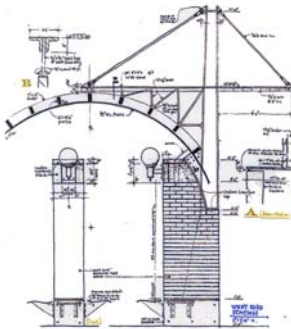


West End Station



Pearl Street Station

**Oglesby-Greene** designed four rail stations within the downtown portion of the Dallas Area Rapid Transit starter system; *St. Paul, Akard, West End, and Pearl Station.*



Akard Street Station, custom seat detail

## DART RAIL STATIONS

Each of the 12'x 32' shelters, in addition to providing seating and cover from the elements, serves as a *marker* for riders to stage their anticipated loading. The CBD stations are scaled down considerably in relation to the prototypical suburban stations to adapt to the scale of the downtown street and its pedestrian users.

The stations repeat in form, structure and general detail; but vary in color and masonry materials for contextual association. Canopies are rolled steel plate hung from 3 steel columns with masonry bases. The center column usually serves as a support pole for the electrified catenary cable system powering the trains. Supports and lighting are provided to display banners related to the adjacent merchant's wares as well as seasonal events. Seats were custom designed by Architect and have become favored by DART for future rail and bus stations.

AIA/Dallas Design Award, 1997



Pearl Street Station